

**PLANICA**  
FIS NORDIC WORLD SKI CHAMPIONSHIPS  
**2023** Presented by  **storaenso**

# TEAM CAPTAINS MEETING

2.3.2023

## MEN Relay 4x10km C/F



SKI ASSOCIATION OF SLOVENIA  
Organizing Committee Planica  
Podutiška 146, 1000 Ljubljana  
Slovenia

Office  
Rateče 167 a  
4283 Rateče - Planica

Tel.	+386 51 61 09 44
E-mail	<a href="mailto:planica@sloski.si">planica@sloski.si</a>
Web	<a href="http://www.planica2023.si">www.planica2023.si</a>



FIS Nordic World Ski Championships 2023



# Agenda

- ROLL CALL
- COMPETITION JURY
- EVENT PROGRAM
- DETAILED SCHEDULE MAR 3<sup>RD</sup>
- WEATHER FORECAST
- ENTRIES AND DRAW
- SKI STADIUM
- COMPETITION COUSE
- COURSE PREPARATION
- COACH ZONES
- TRAINING, SKI TESTING AND WARMING UP
- INFO FIS TD
- INFO FIS RD
- INFO OC



# Roll Call

AND	BOL	<b>CZE</b>	GBR	IRL	KSA	MEX	PER	SVK	<b>USA</b>
ARG	BRA	DMA	<b>GER</b>	ISL	<b>LAT</b>	MGL	POL	<b>SWE</b>	VEN
ARM	BUL	ECU	GRE	ISR	LBN	MKD	POR	THA	
AUS	<b>CAN</b>	ESP	HAI	<b>ITA</b>	LIE	MNE	ROU	TPE	
AUT	CHI	<b>EST</b>	HUN	<b>JPN</b>	LTU	NGR	<b>SLO</b>	TTO	
BEL	COL	<b>FIN</b>	IND	<b>KAZ</b>	MAR	<b>NOR</b>	SRB	TUR	
BIH	CRO	<b>FRA</b>	IRI	KGZ	MDA	PAN	<b>SUI</b>	UKR	



# SCHEDULE MARCH 3<sup>RD</sup>

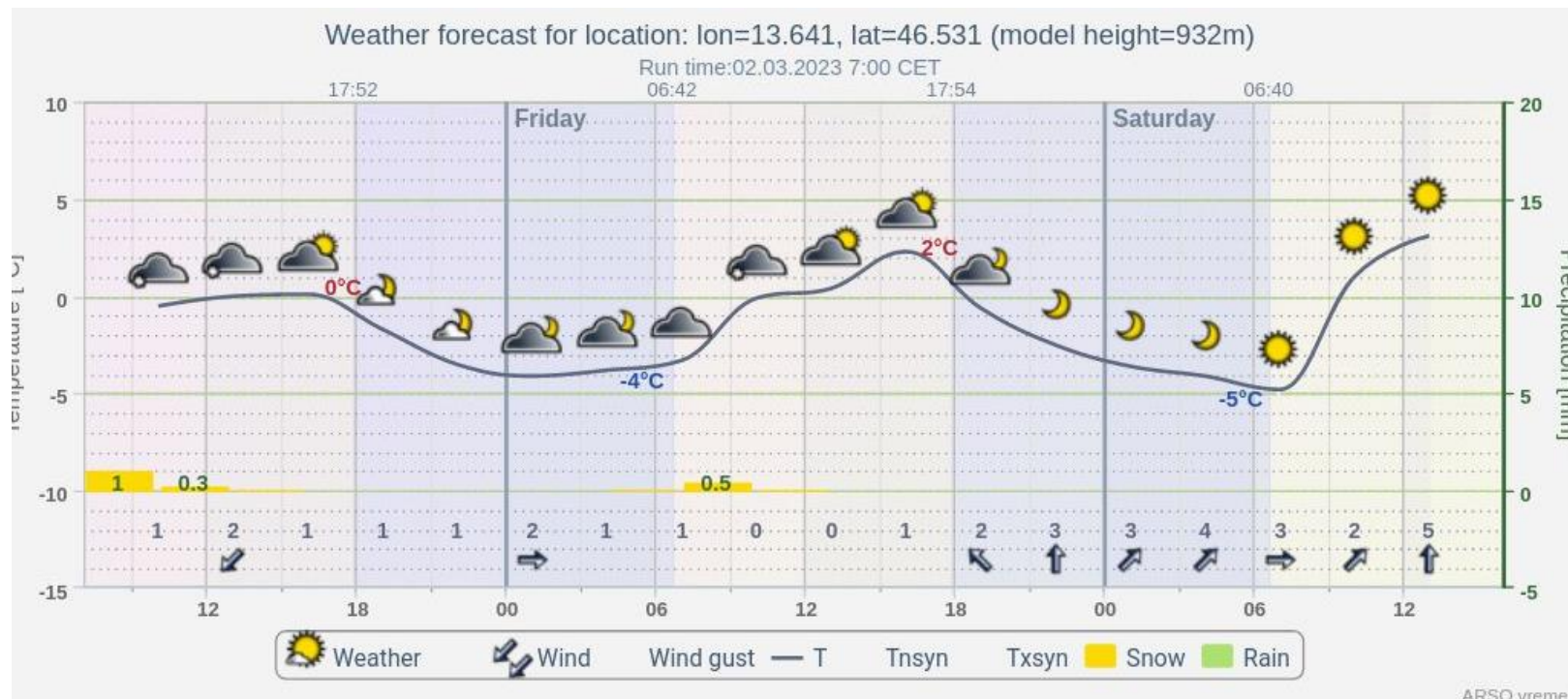
12:30	RELAY M, 4 x 10 km
15:00	CC OFFICIAL TRAINING 30 km W NC OFFICIAL TRAINING
18:00	TEAM CAPTAINS MEETING



# Weather forecast for Friday

## Friday:

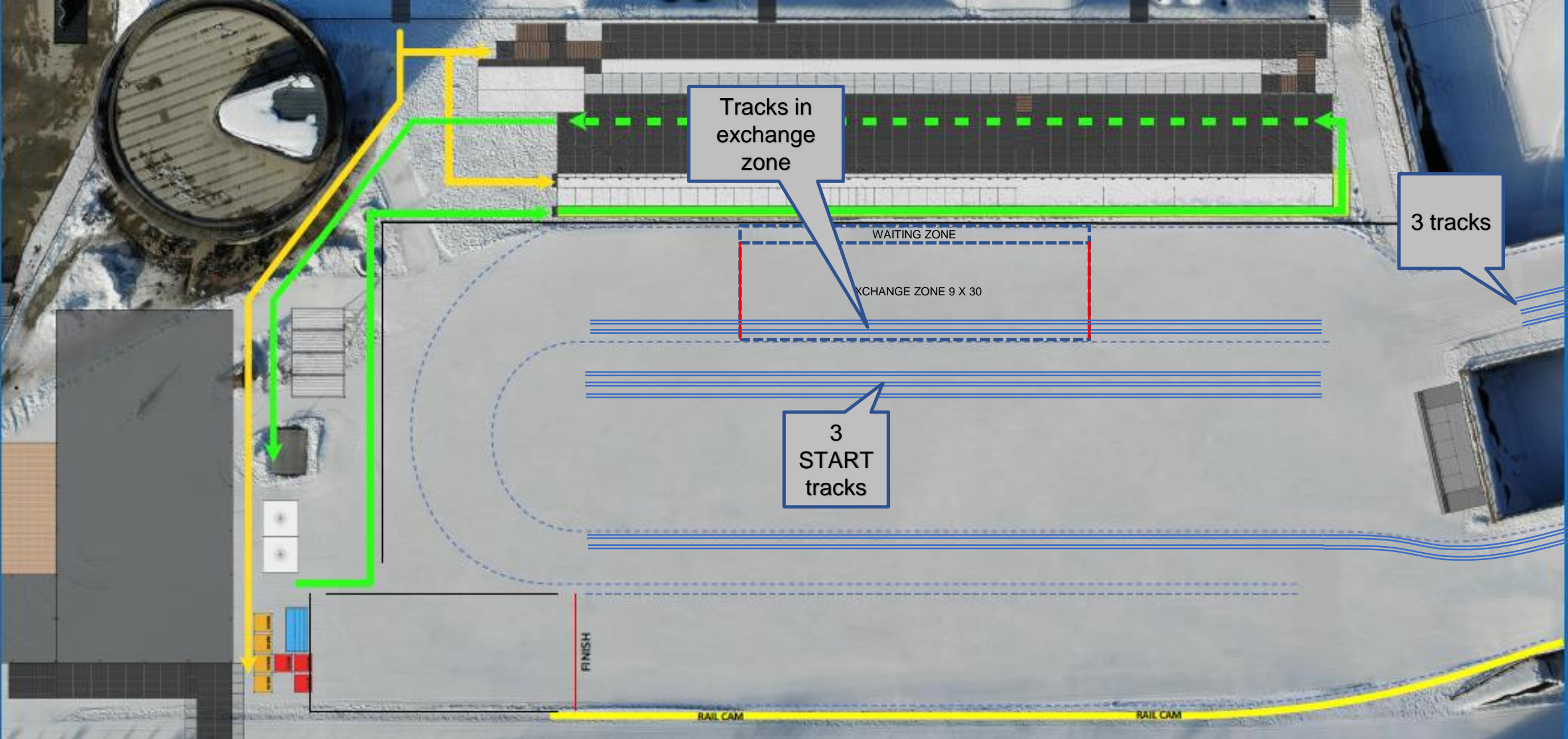
- Night will be partially cloudy.
- Morning will be mostly cloudy, some snow showers are possible.
- There will be more and more patches of blue sky towards the afternoon.
- Sky will get clear early in the night.
- Morning temperature: -3 deg. C.
- Daily max: +5 deg. C



# ENTRIES AND DRAW

- 15 nations entered
- Competitors need to pick up transponders and GPS transponders prior to start!
- Bibs will be available at Race office from 9AM on









Hint:  
Use layers to turn off cameras,  
IMT and Preetime positions.

# PLANICA

FIS NORDIC WORLD SKI CHAMPIONSHIPS  
2023

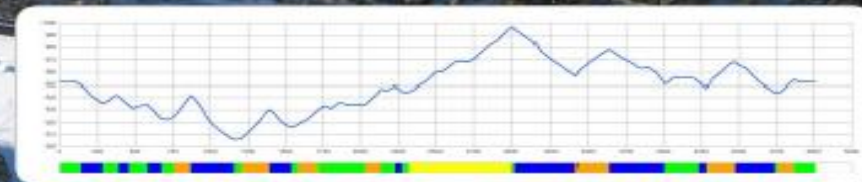
Presented by  storaenso

## CROSS COUNTRY COURSE MAP 5km BLUE

Course length:	4.956 m
Course category:	D
Height Difference (HD):	90 m
Maximum climb (MC):	52 m
Total Climb (TC):	200 m
Lowest point:	906 m
Highest point:	996 m

Use: CC Men Relay 4 x 10 km C/F  
CC Women Relay 4 x 5 km C/F

Homologation certificate: WC22/74.09/5.0





# COURSE PREPARATION

- Grooming Now, Estimated end at 9PM
- Competition course 2 C tracks on right, V boards on some sections
- 1 Diagonal zone
- Test Area 3 for Gliding + C tracks for grip
- Test Area Gliding + C tracks for grip





**COACH ZONES**

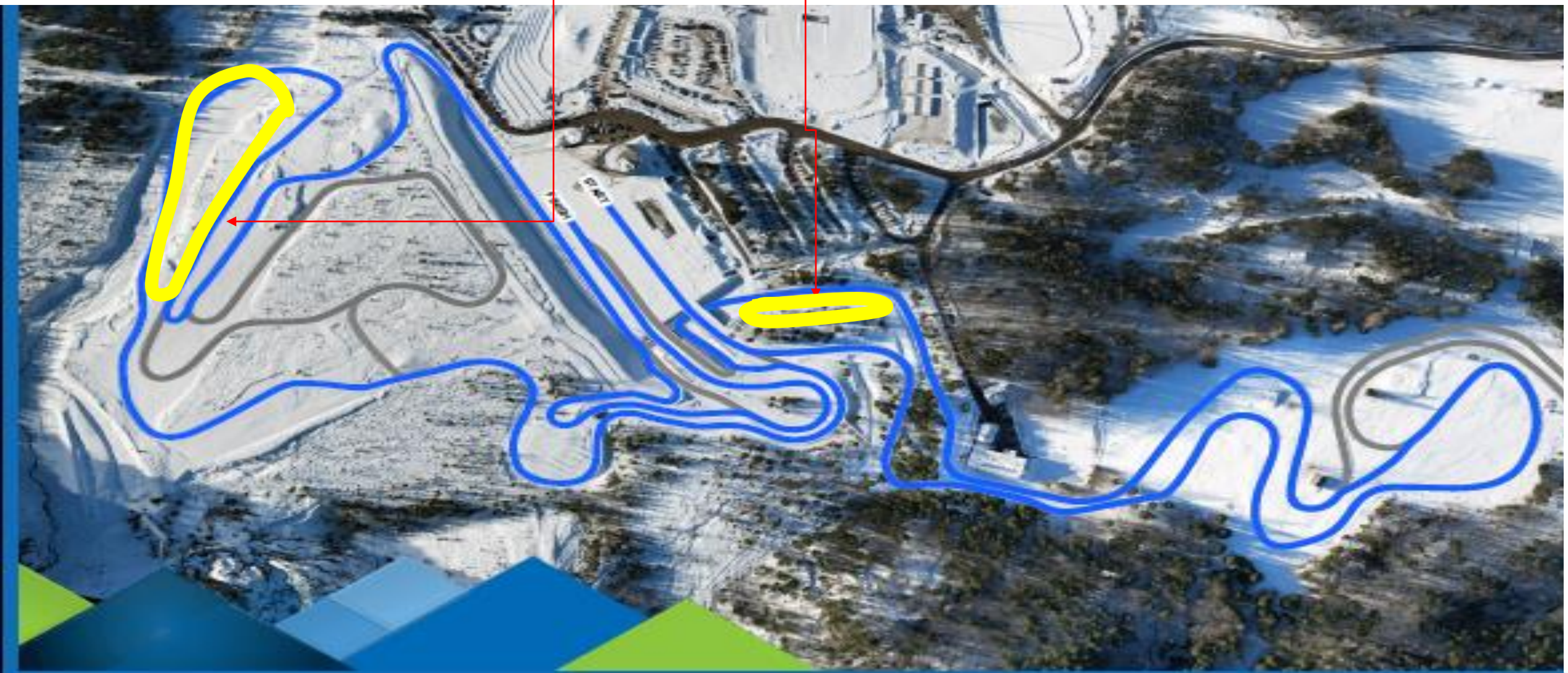
INTERVIEW POSITION  
(DISTANCE)

INTERVIEW POSITION  
(SPRINT)





Test area + Test 3 + Test 1








# Diagonal technique zone





# SKI TEST, WARMING UP, TRAINING

Course opening times	Courses	Remarks	CC Staff		
					
			Course	Start/Finish	Staff
<b>Friday 03/03/2023</b>					
09:00 - 17:00	Test area		X	X	X
9:30 – 12:15	Ski Test 1	Kick	X	X	X
9:30 – 12:15	Ski Test 3	Kick and Glide	X	X	X
09:00 - 17:00	Unused part of the red course	Kick and Glide with 4 classic tracks	X	X	X
9:30 – 12:25	All courses	Men and women	X		
<b>12:30 - CC RELAY 4 X 10 km Men C/F</b>	5 km blue				
15:00 – 17:00 CC Official Training 30 km W	3.75 km red + 3.75 km blue	No regrooming	X	X	X
15:00 – 17:00 NC Official Training	2.5 km blue				
18:00 TCM Mass Start C 30 km Women					

# INFORMATION FROM FIS TD

- Sanctions today
- Substitution is possible according to ICR art. 313.4.
- 343.13.1 In a team event, the exchange is achieved by the arriving competitor, with a tap of the hand on any part of the next competitor's body while both competitors are in the relay exchange zone.





# INFORMATION FROM FIS



# Lost & Found

